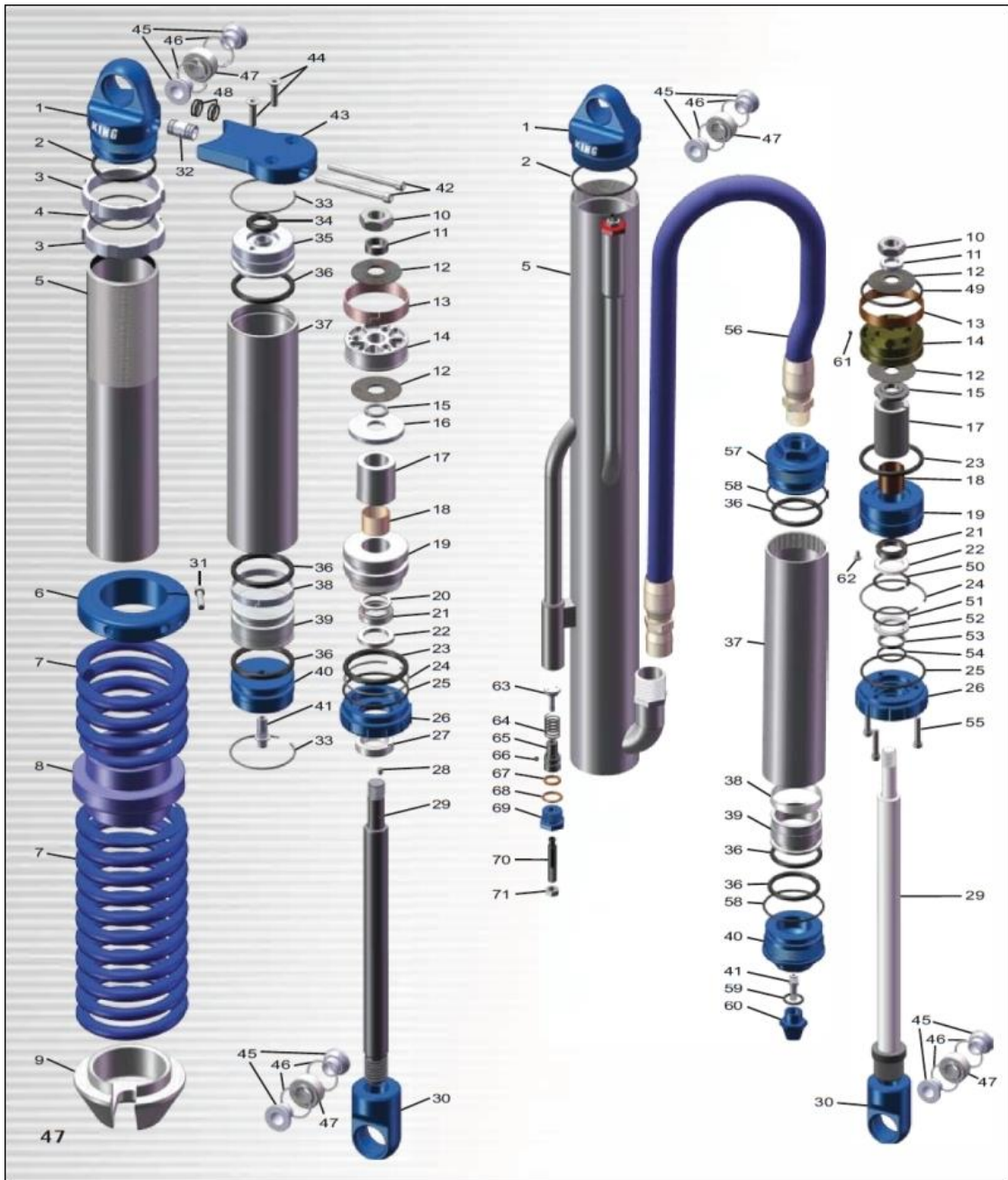


FILTHY MOTORSPORTS - KING PARTS LIST



- | | | | |
|---|---|--|--|
| 1 - Top Cap | 21 - Main Seal | 41 - Schrader Valve | 61 - Piston Bleed Screw |
| 2 - Top Cap O-Ring | 22 - Main Seal Retainer | 42 - Piggyback Mounting Plate Bolts | 62 - Seal Cap Bleed Screw |
| 3 - Secondary Nuts | 23 - Seal Cap O-Ring | 43 - Piggyback Mounting Plate | 63 - Bypass Valve |
| 4 - Secondary Nut O-Ring | 24 - Shock Cylinder C-Clip | 44 - Piggyback Reservoir End Cap Bolts | 64 - Bypass Spring |
| 5 - Shock Cylinder | 25 - Wiper Cap O-Ring | 45 - Misalignment Spacer | 65 - Bypass Valve Stop |
| 6 - Coil Adjustment Nut | 26 - Wiper Cap | 46 - Bearing C-Clips | 66 - Bypass Valve Stop Set Screw |
| 7 - Coil Spring | 27 - Wiper Seal | 47 - Spherical Bearing | 67 - Bypass Valve Stop O-Ring |
| 8 - Coil Slider | 28 - Set Screw | 48 - Piggyback Mounting Sleeve O-Rings | 68 - Bypass Adjusting Nut O-Ring |
| 9 - Coil Plate | 29 - Shock Shaft | 49 - Piston O-Ring | 69 - Bypass Adjusting Nut |
| 10 - Piston Retaining Nut | 30 - Rod End | 50 - Main Seal C-Clip | 70 - Bypass Adjusting Screw |
| 11 - Piston Retaining Washer | 31 - Coil Adjustment Pinch Bolt | 51 - Wiper Seal C-Clip | 71 - Bypass Adjusting Jam Nut |
| 12 - Valve Shims | 32 - Piggyback Mounting Sleeve | 52 - Wiper Seal Retainer | 72 - King Shock Oil |
| 13 - Piston Wear Band | 33 - Reservoir C-Clip | 53 - Wiper Seal | |
| 14 - Piston | 34 - Piggyback Adaptor O-Ring | 54 - Wiper O-Ring | |
| 15 - Base Washer | 35 - Piggyback Reservoir Oil End Cap | 55 - Wiper Cap Bolts | |
| 16 - Top Out Washer | 36 - Reservoir O-Rings | 56 - Remote Reservoir Hose | |
| 17 - Shaft Spacer | 37 - Reservoir Cylinder | 57 - Remote Reservoir Oil End Cap | |
| 18 - Shaft Guide / DU Bushing | 38 - Reservoir Piston Wear Band | 58 - Remote Reservoir End Cap O-Ring | |
| 19 - Seal Cap | 39 - Reservoir Piston | 59 - Schrader Valve Cap O-Ring | |
| 20 - Shaft O-Ring | 40 - Remote Reservoir Air End Cap | 60 - Schrader Valve Cap | |